



PRESCOT STREET, LONDON E1
20,000 - 107,491 SQ FT OFFICES TO LET

A striking building with a double height reception and wrap around terraces



Arranged over 8 floors, 66 Prescott Street provides well specified and efficient offices, with excellent natural light.

The upper floors benefit from wrap around terraces and the entrance comprises a dedicated WiFi enabled tenant lounge, with meeting room and refreshment facilities.



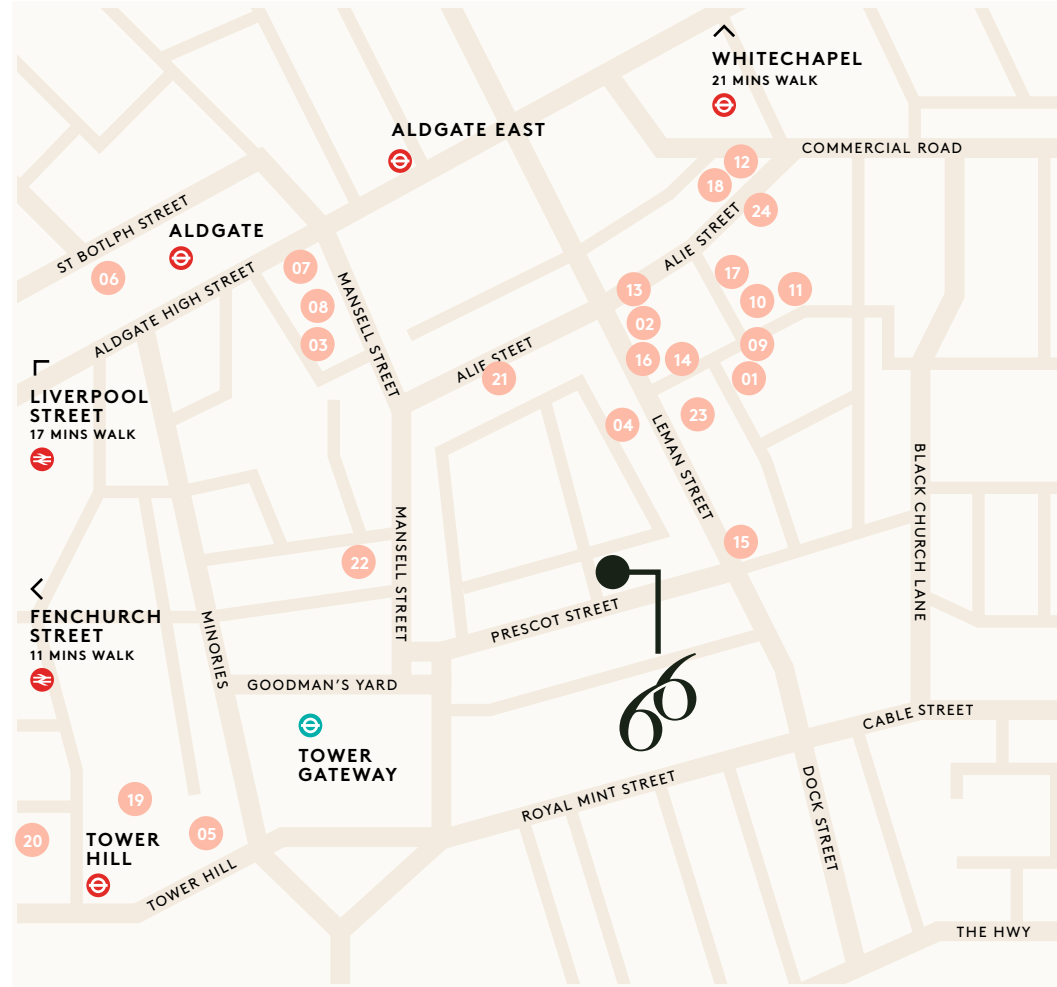
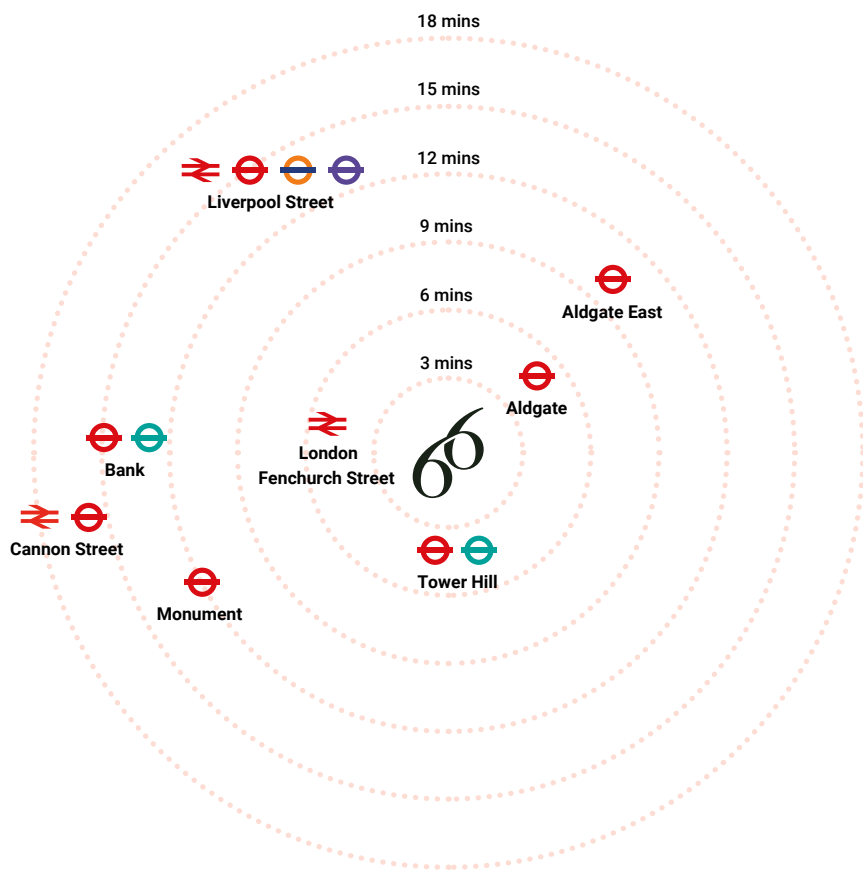
High quality
workspace

Terraces with panoramic views and extensive amenities...

| | | | |
|---|--|---|---|
|  <p>Dedicated WiFi enabled tenant lounge</p> |  <p>Double-Height Reception</p> |  <p>4 Pipe Fan Coil Air Conditioning</p> |  <p>250mm Raised Access Floor</p> |
|  <p>Floor To Ceiling Height 2.70m</p> |  <p>Separate Male and Female Showers</p> |  <p>Metal Tile Suspended Ceilings</p> |  <p>24 Hour Access and Security</p> |
|  <p>5 Car Parking Spaces</p> |  <p>Fully DDA Compliant</p> |  <p>Loading Bay</p> |  <p>Terraces</p> |



Walking Times



Connectivity

The building benefits from good transport links with Aldgate and Aldgate East Underground Stations circa 300m to the north and Tower Hill 300m to the south west.

Eat and Drink

- 01 DanDan
- 02 Lemn Street Tavern
- 03 Duke of Somerset
- 04 The Oliver Conquest
- 05 Cento Alla Torre
- 06 Jin Bo Law
- 07 The Hoop and Grapes
- 08 Paris London Burgers
- 09 Zia Lucia
- 10 Amber
- 11 Kova Patisserie
- 12 The Castle
- 13 Pizza Union
- 14 The Running Horse

Lifestyle

- 15 Urban Fitness
- 16 Curzon Cinema & Bar
- 17 AIM Escape Rooms
- 18 Boom Battle Bar
- 19 CitizenM Tower of London Hotel
- 20 Four Seasons Trinity Square
- 21 Anytime Fitness
- 22 Victus Soul
- 23 Four Seasons Garden
- 24 Crossfit



The place to be with great connectivity

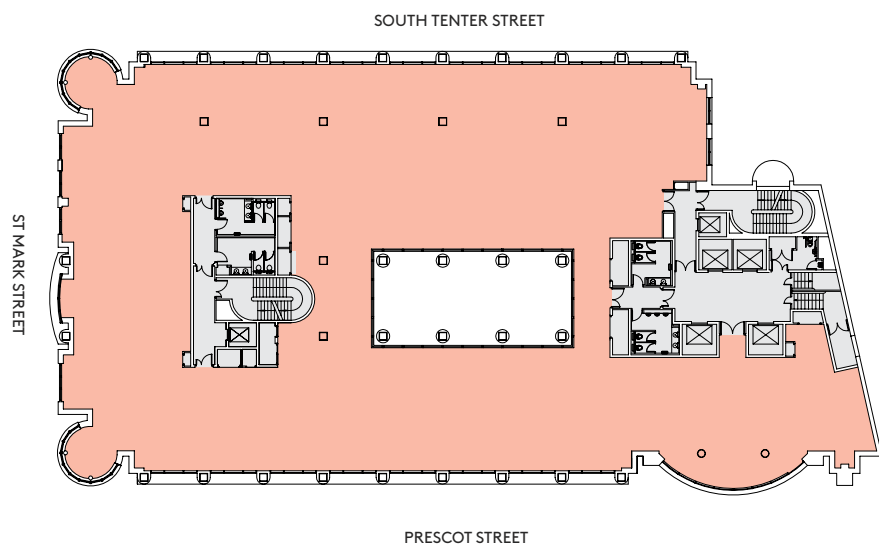
Prescot Street has undergone a transformation in the last 5 years with a range of new hotels, high class residential and office developments.

Accommodation

| Floor | | Sq Ft | Sq M |
|--------------|---------|----------------|--------------|
| 7th | Terrace | 9,364 | 870 |
| 6th | Terrace | 11,851 | 1,101 |
| 5th | | 13,745 | 1,277 |
| 4th | | 12,788 | 1,188 |
| 3rd | | 13,853 | 1,287 |
| 2nd | | 13,088 | 1,216 |
| 1st | | 12,486 | 1,160 |
| Ground | | 10,363 | 963 |
| Lower Ground | | 9,953 | 925 |
| Total | | 107,491 | 9,987 |

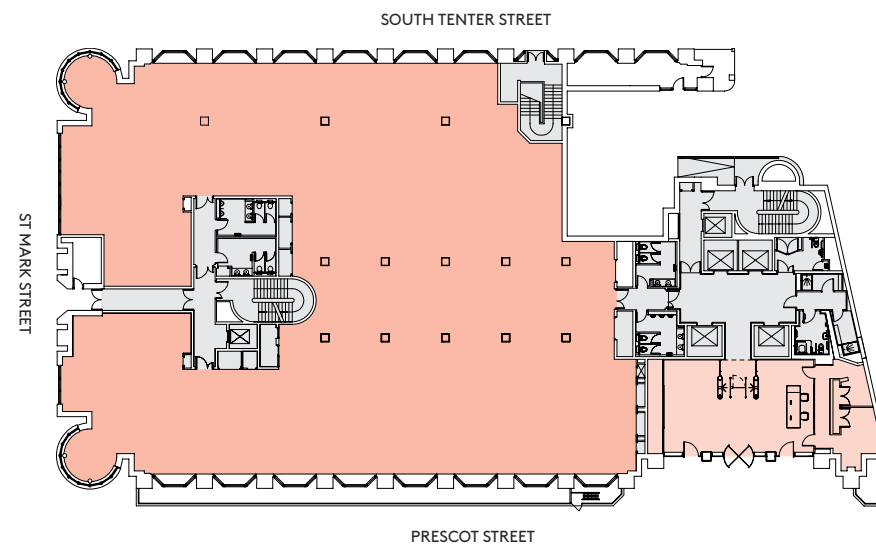
4th Floor

12,788 sq ft / 1,188 sq m



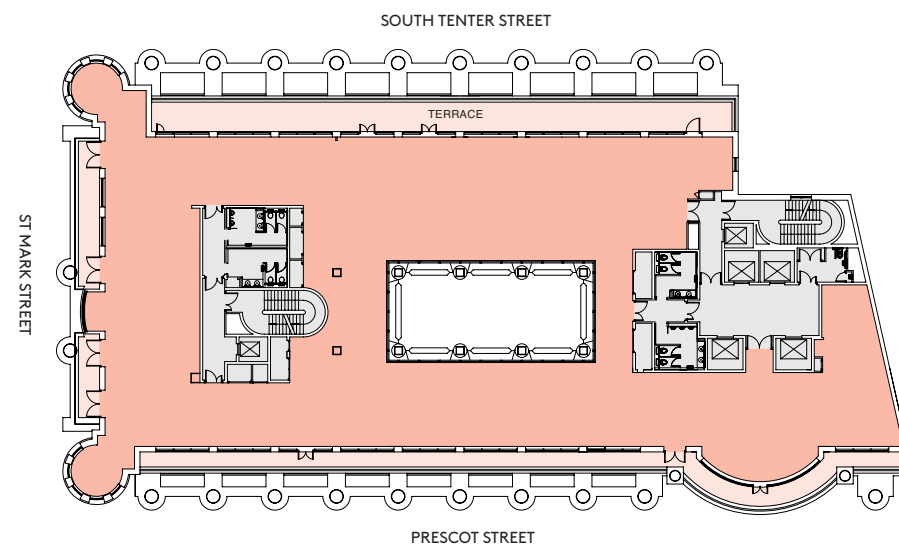
Ground Floor

10,363 sq ft / 963 sq m



7th Floor

9,364 sq ft / 870 sq m

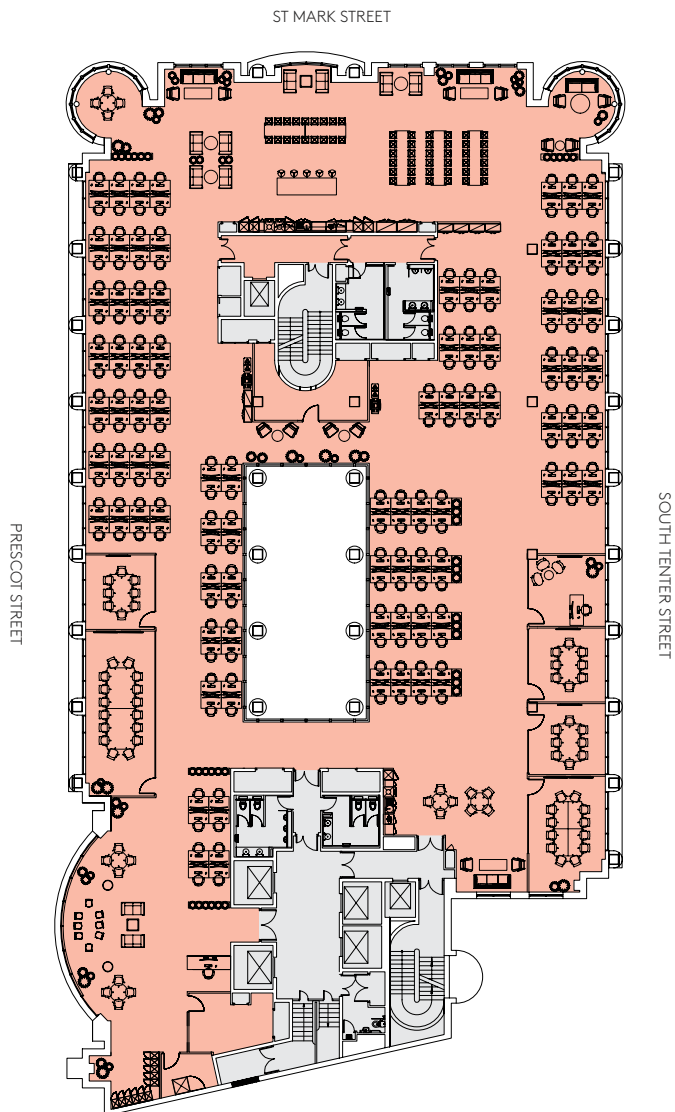


Space Plans

4th Floor - Corporate Layout

12,788 sq ft / 1,188 sq m

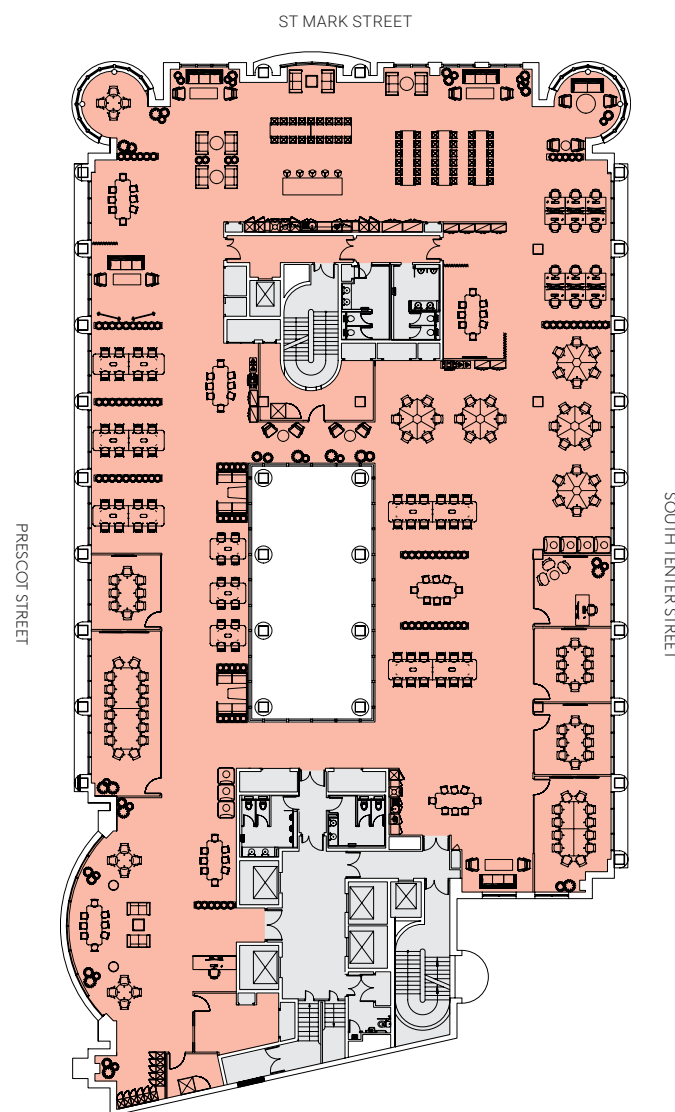
- Reception
- Lounge
- 2no Boardroom
- Exec Room
- 3no 6p Meeting Room
- 172p Open Plan Office
- Printer Stations
- Phone Booths
- Lockers
- Teapoint
- Breakout Area



7th Floor - Creative Layout

9,364 sq ft / 870 sq m

- Reception
- Lounge
- 2no Boardroom
- Exec Room
- 3no 6p Meeting Room
- 126p Open Plan Office
- Printer Stations
- Phone Booths
- Lockers
- Teapoint
- Breakout Area



Terms

Upon application.

RICHARD CLARKE

07811 790 179

richard.clarke@fishergerman.co.uk

DOUG GORDON

07884 408 136

doug.gordon@fishergerman.co.uk



Viewings

Strictly through the joint agents.

JONATHAN BEILIN

07967 392 016

jb@newtonperkins.com

LEO GOUGH

07546 695 724

lg@newtonperkins.com



Please Note: Fisher German LLP and Newton Perkins give notice that: 1. They have no authority to make or give any representation or warranty on any property whether on their own behalf or on behalf of their clients or otherwise. 2. They do not owe any duty of care to you and assume no responsibility for any statements, representations, warranties or otherwise made in the particulars and you should not rely on those in the particulars. 3. The particulars are produced in good faith are set out as a general guide only and do not constitute or form an offer or a contract or part thereof. 4. Any photographs, descriptions, plans, measurements, distances and any other details in the particulars are approximate estimates only taken as the property appeared at the time and should not be relied upon as factually accurate. 5. Fisher German and Newton Perkins assumes prospective purchasers/tenants have carried out inspections to satisfy themselves that the information in the particulars is correct. October 2024
Map data ©2024 Google Maps. Design by darwooddesign.com.

